

FOR SALE

AVAILABLE NOW! - \$799,900



22538 Nature Creek Circle
Lakeview Estates Phase IV of Frankfort – Lot 32

Wow! This is it...a brand new extraordinary professionally designed custom home with loads of space and functionality! This spacious and open floor plan features a 2nd floor catwalk that overlooks the two-story foyer w/ custom tray ceiling and two-story family room. The entry looks through to the x-large family room that has dramatic floor-to-ceiling windows and a custom stone fireplace. The gourmet kitchen is a master piece and is open to the dinette and family room. The oversize master bedroom suite is amazing with a separate sitting area including a 3-sided fireplace – the master shower is an experience in itself – and you could get lost in the huge master closet.

Also included is what every busy family needs, a “drop-off zone” with drawers that conceal electrical outlets to charge phones and ipods, open cubbies for briefcase/bag storage, mail slots, and corkboard message center. You will also find a separate mudroom with lockers and a spacious laundry room with a folding/work area and extra storage. Review the impressive features list over on the right side of this flyer for all that this gorgeous custom home has to offer. Located in the highly acclaimed Frankfort school district on a walkout lot on conservation area/pond! Price includes deck & landscaping package.

FOR MORE INFORMATION:

708-250-7048

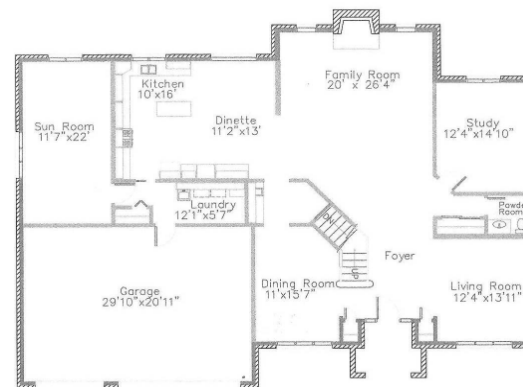
www.quantum-building.com

QUANTUM
BUILDING & DESIGN

THE RIVERTON II

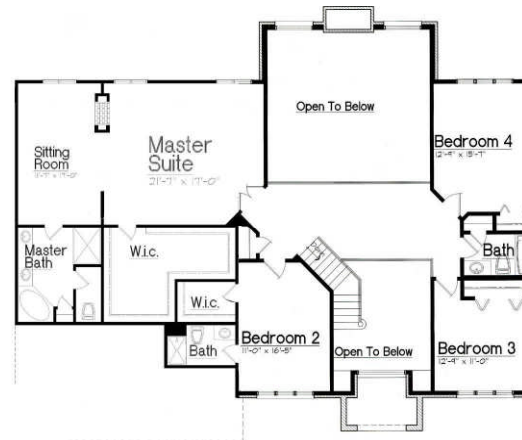
CUSTOM TWO-STORY
4300 SQ FT - 4 BR/3.5 BATH/3 FP

FIRST FLOOR



Note: Actual floor plan has been slightly modified from what is shown.

SECOND FLOOR



Features include...

- Professionally designed
- Custom kitchen floor to ceiling cabinets - lighted top cabinets w/ frosted doors – center island, plus walk-in pantry
- Granite countertops throughout
- GE Profile stainless steel appliances w/ GE Monogram cook top w/ griddle & Advantium oven
- Butlers pantry w/ beverage cooler
- Custom lighting package
- Intercom/Audio system wired throughout
- Two-story 3-level cultured stone fireplace w/ custom black iron insert
- 5' oak plank hardwood floors
- Extra-wide custom staircase w/ iron balusters & carpet runner
- Dining room features shadow box trim & niche
- Cherry doors throughout
- X-large master bedroom w/ spa bath – features walk-in shower w/ Kohler Water Tile Shower Experience – overhead rainhead & 6 bodysprays, whirlpool tub, separate vanities, built-in cabinetry, & a huge master closet
- Custom tray ceilings
- Custom-design jeld-wen windows w/ Low-e glass
- Upgraded trim package
- Blown cellulose insulation
- Tankless hot water heater for instant hot water
- 92% efficient furnace/Aprilaire humidifier
- All brick/stone/hardie board exterior w/ double entry front door
- 3 car garage